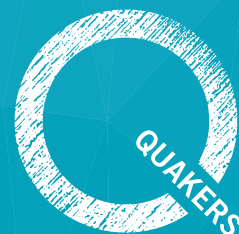


Britain Yearly Meeting of the Religious
Society of Friends (Quakers)

Patterns of membership

including the 2022 tabular statement

Compiled for Yearly Meeting,
Friends House, London and online
28 April–1 May 2023 and additional
session, 1 July 2023



Membership patterns in Britain

Yearly Meeting

The tabular statement of membership has been published annually since 1861. It informs the yearly meeting of the number of Friends in membership, based on information provided by area meetings (see *Quaker faith & practice* 4.10h).

This document contains information down to area meeting level. Additional data, including local meeting data, will be available online at www.quaker.org.uk/ym.

Membership

Membership of the yearly meeting at the end of 2022 was 11,491 (11,828 in 2021), a decrease of 337. During the year 157 came into membership. The membership of 170 adults was terminated and area meetings recorded 285 deaths.

Attenders

The number of recorded adult attenders was 6,049 (6,479 in 2021) and there were 899 children not in membership (1,006 in 2021).

Marriages

There were 39 marriages in 2022 (24 in 2021). In five of these both partners were members of Britain Yearly Meeting; in 20, one partner was a member; and in 14, neither partner was a member. There were 36 weddings of mixed gender couples and three weddings were of same gender couples.

The statistical tables

Quakers in regions and general meetings of Britain

Table 1 provides a summary of incomings and outgoings for Britain Yearly Meeting as a whole. Membership fell by 2.67% over the year. New memberships rose by nine compared to 2021. Terminations increased by 53.

Table 2 provides membership statistics for the yearly meeting since 1935.

Table 3 provides a regional summary of the number of members and attenders as well as an indication of the proportion who are children, attenders and women. 58% of members and attenders are women and 37% of all adults are attenders. The gender category of 'other' (introduced in 2015) has been used by a few

area meetings. Meetings may wish to make members and attenders aware of the opportunity to be recorded this way.

Table 4 summarises trends in membership over the last ten years. Convincements over 10 years represent 2,611 Friends or 22.7% of total membership. Terminations over the same period were 1,844 and deaths were 3,072. This resulted in a decline in membership of 2,415 with notified changes from 2012. The overall decline in members and attenders in the year is from 19,313 to 18,439.

Area meetings

Table 5 provides information on members, attenders and children for each area meeting, as well as information on those joining and leaving over the last ten years.

Table 6 looks at trends at area meeting level over ten years. Over this time the membership of one area meeting grew and in four area meetings the total number of adults (members and attenders) remained the same.

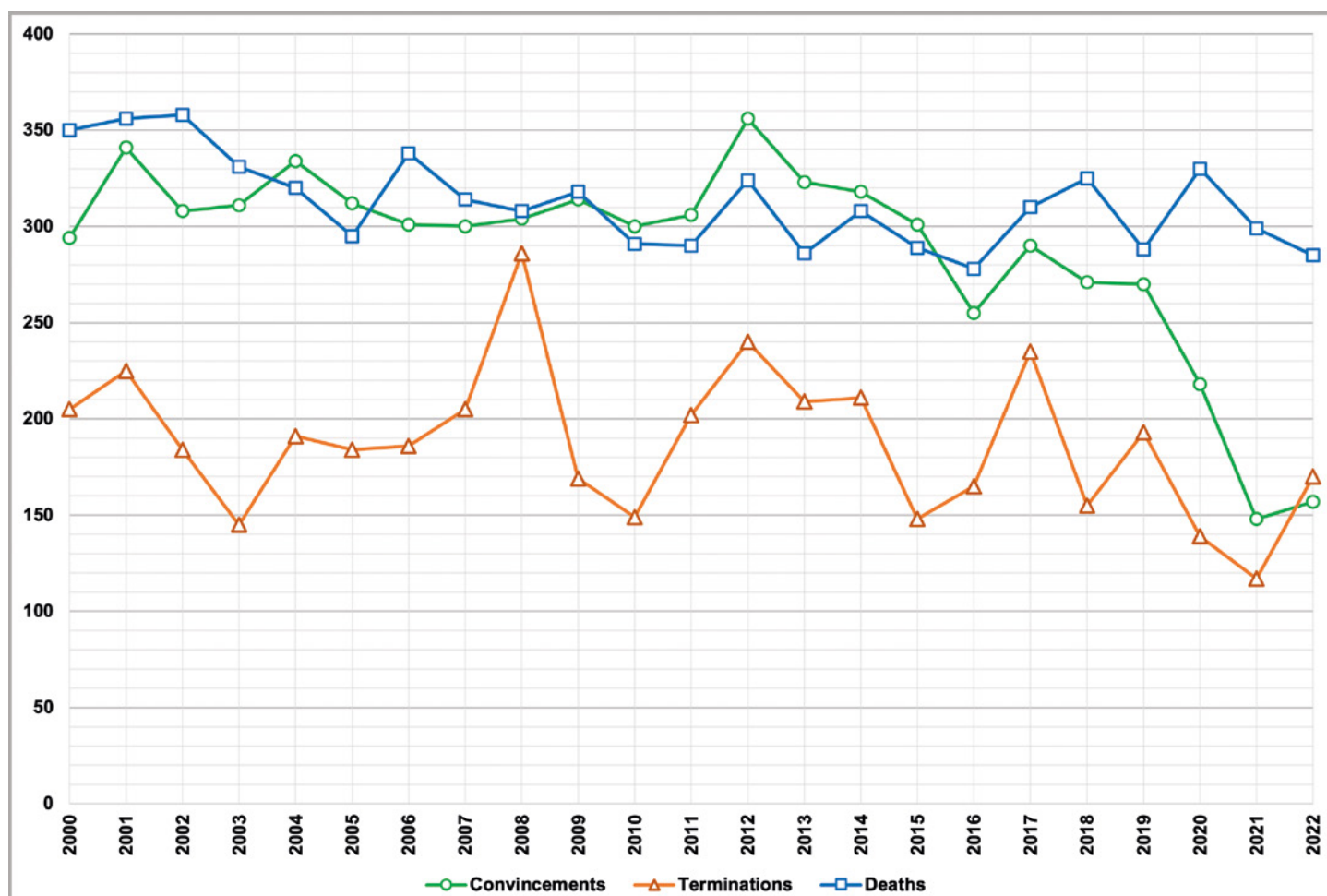
Local meetings

There were 456 local meetings (LMs) at the end of 2022 and four unofficial worshipping groups under the care of a local meeting. Two meetings opened and four local meetings informed us of closure. A significant number of Quakers continue to gather online, in local and area meeting groups as well as participating in national and international worship. A large number of meetings meet in a blended way, combining online participation with in-person attendance.

Table 1. Quakers coming into membership and ceasing to be members of Britain Yearly Meeting in 2022

Incomings	2021	2022	Outgoings	2021	2022
By application			By termination of membership		
Adults	133	155	initiative of member	88	125
Children	15	2	initiative of area meeting	29	45
Subtotal	148	157	termination of children's membership	0	0
			Subtotal	117	170
By certificate			By death	299	285
from Britain Yearly Meeting	118	122	By certificate		
from another yearly meeting	1	4	to Britain Yearly Meeting	116	127
Subtotal	119	126	to another yearly meeting	8	5
			Subtotal	124	132
Total notified incomings to AMs	267	283	Total notified outgoings from area meetings	540	587
	2021	2022		2021	2022
Members living abroad	113	108	Total number of members at start of year	12,125	11,795
Sojourning members	28	29	Recorded +/- in membership	-273	-304
Number of area meetings	70	70	Balance of notified discrepancies	-24	-33
Number of local meetings	458	456	Number of members at end of year	11,828	11,491
			<i>As a % of membership loss/gain</i>	-2.45%	-2.67%

Figure 1. Membership in/out changes (2000-2022)
Convincements, terminations, deaths



About the tabular statement

Since 2013, changes have been made to the tabular statement to help make the data more informative and to highlight important patterns and trends. All data is collected from area meetings but at local meeting level. Historical data from the last 20 years is being used to provide more information on trends.

Following requests from individuals and area meetings, Meeting for Sufferings asked the Recording Clerk to consider how best to provide information on gender. As a result, an additional category of “other” has been included (see Terminology below). Some meetings have chosen to use “other” to remove gender reporting in their meetings. These are shown in the tables as ‘Not disclosed’.

Terminology

Attender: one who, not being a member, frequently attends a specific meeting for worship (*Quaker faith & practice* 11.38). Refers to an adult attender; children not in membership are identified separately.

Child: someone under 16 years old.

Member: one who is in membership of the Society. Unless stated differently, figures include children in membership.

Other: adults who have indicated a gender identity other than man or woman. This might include people who have stated they are agender, neutrois or who have a(nother) non-binary gender identity.

Sojourning member: a member of another yearly meeting, recognised as sojourning their membership within an area meeting in Britain (*Quaker faith & practice* 11.27). Identified separately, they are not included in the membership figures.

Boundary changes

In 2015, North Cumbria AM and West Cumbria AM combined to form Cumberland AM. Where two area meetings combine to form a single one, figures provided for all years combine the data for the constituent meetings. Where area meetings have separated into more than one, membership information is based on the actual numbers for each of the constituent local meetings. Up to 2014, figures for flows (convincements, terminations, transfers and deaths) were only collected at area meeting level. Estimates are based on the proportion of the membership forming each new area meeting in the year they were formed. Where a single local meeting moved from one area to another, it has not been possible to adjust the overall historic figures. Data

for that meeting is included with the area meeting of which it is part in any year. This affects Chorley LM, which transferred from Lancashire Central & North AM to Pendle Hill AM in 2016. And in 2021, Leigh-on-Sea LM transferred from North East Thames AM into Mid Essex AM.

Year-end figures and corrections

Each area meeting is required to send tabular statement information for the year ending 31 December. Meetings are given an opportunity to correct previous year data with subsequent amendments to changes (including transfers and deaths), which were minuted within the last year but not returned before the year-end deadline.

In the past, revisions were included in the figures for the following year. As this distorts trends, the method adopted since 2014 is to modify membership figures each year to take into account corrections provided the following year. These corrections are indicated in the notified discrepancies row within Table I.

This document and supplementary tables are also available for download from:

www.quaker.org.uk/ym.

For other formats please contact:

Recording Clerk's Office,
Quakers in Britain
Friends House, 173 Euston Road,
London NW1 2BJ

Statement Coordinator, contact:

Penny Finch

E: tabstat@quaker.org.uk

Table 2. BYM membership statistics, 1935 to 2022

Date	Members			Attendees			Members plus attendees			Annual changes			
	Adult members	Child members	Total members	Adult attendees	Children not in membership	Total attendees	Adults	Children	Total-all	Members*	Adult members and attendees	Annual changes: children	Overall total changes
1935	17,251	2,050	19,301										
1940	17,821	2,006	19,827							105			
1945	17,851	2,683	20,534							141			
1950	17,486	3,309	20,795							52			
1955	17,439	3,904	21,343							110			
1960	17,655	3,567	21,222							-24			
1965	18,208	2,854	21,062	5,248	3,899	9,147	23,456	6,753	30,209	-32			
1970	18,832	1,920	20,752	5,796	4,345	10,141	24,628	6,265	30,893	-62	1,172	-488	684
1975	18,865	1,133	19,998	5,830	4,685	10,515	24,695	5,818	30,513	-244	80	-61	19
1980	17,891	658	18,549	5,880	4,278	10,158	23,771	4,936	28,707	-235	-397	-310	-707
1981	17,790	601	18,391	6,243	4,611	10,854	24,033	5,212	29,245	-158	262	276	538
1982	17,741	562	18,303	6,557	4,836	11,393	24,298	5,398	29,696	-88	265	186	451
1983	17,631	500	18,131	6,788	4,655	11,443	24,419	5,155	29,574	-172	121	-243	-122
1984	17,574	471	18,045	7,358	4,956	12,314	24,932	5,427	30,359	-86	513	272	785
1985	17,605	471	18,076	7,732	5,006	12,738	25,337	5,477	30,814	31	405	50	455
1986	17,636	435	18,071	7,936	5,188	13,124	25,572	5,623	31,195	-5	235	146	381
1987	17,692	395	18,087	8,174	5,203	13,377	25,866	5,598	31,464	16	294	-25	269
1988	17,640	370	18,010	8,529	5,089	13,618	26,169	5,459	31,628	-77	303	-139	164
1989	17,709	361	18,070	8,691	5,183	13,874	26,400	5,544	31,944	60	231	85	316
1990	17,765	319	18,084	8,758	5,114	13,872	26,523	5,433	31,956	14	123	-111	12
1991	17,760	312	18,072	8,997	5,340	14,337	26,757	5,652	32,409	-12	234	219	453
1992	17,651	283	17,934	8,995	4,886	13,881	26,646	5,169	31,815	-138	-111	-483	-594
1993	17,549	253	17,802	9,207	4,857	14,064	26,756	5,110	31,866	-132	110	-59	51
1994	17,351	228	17,579	8,958	4,898	13,856	26,309	5,126	31,435	-223	-447	16	-431
1995	17,296	222	17,518	8,901	4,629	13,530	26,197	4,851	31,048	-61	-112	-275	-387
1996	17,119	211	17,330	9,054	4,458	13,512	26,173	4,669	30,842	-188	-24	-182	-206
1997	16,998	191	17,189	9,129	4,304	13,433	26,127	4,495	30,622	-141	-46	-174	-220
1998	16,786	192	16,978	9,201	4,108	13,309	25,987	4,300	30,287	-211	-140	-195	-335
1999	16,532	179	16,711	9,038	4,046	13,084	25,570	4,225	29,795	-267	-417	-75	-492
2000	16,312	174	16,486	9,058	3,770	12,828	25,370	3,944	29,314	-225	-200	-281	-481
2001	16,032	169	16,201	8,719	3,635	12,354	24,751	3,804	28,555	-285	-619	-140	-759
2002	15,796	149	15,945	8,412	3,453	11,865	24,208	3,602	27,810	-256	-543	-202	-745
2003	15,615	142	15,757	8,565	3,382	11,947	24,180	3,524	27,704	-188	-28	-78	-106
2004	15,415	133	15,548	8,468	3,017	11,485	23,883	3,050	26,933	-209	-297	-474	-771
2005	15,273	101	15,374	8,127	2,764	10,891	23,404	2,865	26,269	-170	-479	-185	-664
2006	15,065	82	15,147	8,164	2,475	10,639	23,212	2,557	25,769	-248	-192	-308	-500
2007	14,847	63	14,910	8,133	2,228	10,361	22,980	2,291	25,271	-220	-232	-266	-498
2008	14,552	55	14,607	8,017	2,190	10,207	22,569	2,245	24,814	-303	-411	-46	-457
2009	14,371	59	14,430	8,330	2,237	10,567	22,701	2,296	24,997	-177	132	51	183
2010	14,220	55	14,275	8,560	2,196	10,756	22,780	2,251	25,031	-155	79	-45	34
2011	14,048	49	14,097	8,711	2,107	10,818	22,759	2,156	24,915	-178	-21	-95	-116
2012	13,873	43	13,916	8,681	2,004	10,685	22,554	2,047	24,601	-181	-205	-109	-314
2013	13,656	47	13,703	8,495	1,984	10,479	22,151	2,031	24,182	-213	-403	-16	-419
2014	13,483	44	13,527	8,409	1,947	10,356	21,871	1,990	23,861	-176	-280	-41	-321
2015	13,335	41	13,376	7,983	1,683	9,666	21,318	1,724	23,042	-151	-553	-266	-819
2016	13,146	42	13,188	8,131	1,544	9,675	21,277	1,586	22,863	-188	-41	-138	-179
2017	12,884	48	12,892	7,955	1,506	9,461	20,799	1,554	22,353	-296	-478	-32	-510
2018	12,624	42	12,666	7,433	1,476	8,909	20,057	1,518	21,575	-226	-742	-36	-778
2019	12,386	112	12,498	6,965	1,283	8,248	19,351	1,395	20,746	-168	-706	-123	-829
2020	12,032	93	12,125	6,902	1,164	8,066	18,934	1,257	20,191	-373	-417	-138	-555
2021	11,737	91	11,828	6,479	1,006	7,485	18,226	1,098	19,313	-297	-708	-159	-878
2022	11,460	31	11,491	6,049	899	6,948	17,509	930	18,439	-337	-717	-168	-874

* Membership change figures for 1940 to 1960 are annual averages for each five-year period.
 Membership figures from 2000 are adjusted to include subsequent corrections provided by area meetings.

Table 3. Quakers in regions and general meetings of Britain, 2022: summary

Region	Number of members at end 2021						Number of attenders at end 2021						Members plus attenders at end 2021						Percent of total who are children	Percent of adults who are attenders	Percent of adults who are women
	Men	Women	Other	Unspecified / not disclosed (adults)	Children	Total	Men	Women	Other	Children	Unspecified / not disclosed (adults)	Total adults	Men	Women	Other	Children	Unspecified / not disclosed (adults)	Total adults			
Bedfordshire	253	367	-	-	-	620	147	245	-	-	461	400	612	-	-	-	69	1,012			
Berks & Oxon	194	363	-	-	2	559	108	124	-	-	269	302	487	-	-	-	39	789			
Bristol & Wessex	358	653	1	-	12	1,024	178	342	-	-	611	536	995	1	-	-	103	1,532			
Cumberland	50	92	-	-	1	143	24	41	-	-	73	74	133	-	-	-	9	207			
Derbys, Lincs & Notts	151	233	1	-	-	385	81	105	-	-	199	232	338	1	-	-	13	571			
Devon & Cornwall	183	355	-	-	2	540	144	249	-	-	415	327	604	-	-	-	24	931			
Essex & Suffolk	152	268	1	-	-	421	60	88	-	-	198	212	356	21	-	-	30	589			
Hants, SE Dorset & Islands	47	102	-	265	-	414	17	37	-	145	223	64	139	-	-	-	24	613			
Kent	59	128	-	-	-	187	47	65	-	-	114	106	193	-	-	-	2	299			
London	388	676	4	-	1	1,069	206	349	-	-	679	594	1,025	4	-	-	125	1,623			
N Wales & NW England	253	476	-	-	-	729	204	264	2	-	572	457	740	2	-	-	102	1,199			
NE England	135	212	2	-	3	352	65	98	3	-	182	200	310	5	-	-	19	515			
Norfolk, Cambs & Hunts	196	320	1	-	1	518	99	166	2	-	327	295	486	3	-	-	61	784			
Scotland	242	434	-	-	-	676	228	333	3	-	660	470	767	3	-	-	96	1,240			
Sussex & Surrey	236	405	-	-	4	645	141	211	9	-	407	377	616	9	-	-	50	1,002			
Warwick, Leics & Staffs	111	213	-	425	1	750	72	77	-	-	156	183	290	-	-	-	8	898			
Western	314	526	3	-	1	844	222	319	2	-	605	536	845	5	-	-	63	1,386			
Westmorland	128	227	-	-	1	356	74	101	1	-	205	202	328	1	-	-	30	531			
Yorkshire	465	789	3	-	2	1,259	244	287	-	-	592	709	1,076	3	-	-	63	1,788			
REGIONAL TOTALS	3,915	6,839	16	690	31	11,491	2,361	3,501	42	145	6,948	6,276	10,340	58	835	930	17,509	4.6%	63.0%	58.4%	
WALES TOTALS	149	279	-	-	-	428	128	175	2	39	344	277	454	2	-	39	733	5.1%	55.4%	61.9%	
SCOTLAND TOTALS	242	434	-	-	-	676	228	333	3	96	660	470	767	3	-	96	1,240	7.2%	50.6%	61.9%	
ENGLAND TOTALS	3,524	6,126	16	690	31	10,387	2,005	2,993	37	145	5,944	5,529	9,119	53	835	795	15,536	4.9%	63.4%	58.7%	

Table 4. Membership changes in regions and general meetings of Britain, 2022: recent trends

Region	Members				Change in membership 2012-2022	Members and attenders			% of adults who are members		Convincements		Deaths		Terminations		Net geographic moves	
	2022	2021	2012	Change in recorded membership 2021-2022		2022	2021	2012	2022	2012	2022	2012	2022	2012	2022	2012	2022	Ten year net 2022-2012
Bedfordshire	620	637	819	-17	-199	1,081	1,083	1,376	57.4%	59.5%	13	29	16	20	3	20	-8	-43
Berks & Oxon	559	613	735	-54	-176	828	1,089	1,386	67.5%	53.0%	6	18	12	18	50	24	5	6
Bristol & Wessex	1,024	1,065	1,169	-41	-145	1,635	1,477	2,016	62.6%	58.0%	8	18	22	26	19	10	-5	53
Cumberland	143	146	177	-3	-34	216	213	313	66.2%	56.5%	1	2	2	12	0	8	0	-5
Derbys, Lincs & Notts	385	387	459	-2	-74	584	602	780	65.9%	58.8%	7	14	10	6	2	6	1	-1
Devon & Cornwall	540	479	643	+61	-103	955	894	1,095	56.5%	58.7%	7	20	13	15	2	2	3	44
Essex & Suffolk	421	431	502	-10	-81	619	597	830	68.0%	60.5%	9	13	17	13	4	5	2	0
Hants, SE Dorset & Islands	414	431	489	-17	-75	637	683	861	65.0%	56.8%	4	13	10	12	4	3	-7	15
Kent	187	206	251	-19	-64	301	309	447	62.1%	56.2%	0	9	10	7	1	2	5	9
London	1,069	1,103	1,401	-34	-332	1,748	1,873	2,419	61.2%	57.9%	21	54	21	30	19	24	-10	-142
N Wales & NW England	729	746	853	-17	-124	1,301	1,303	1,562	56.0%	54.6%	5	16	12	16	12	11	1	14
NE England	352	366	432	-14	-80	534	610	713	65.9%	60.6%	6	6	9	5	6	8	0	23
Norfolk, Cambs & Hunts	518	521	596	-3	-78	845	843	1,020	61.3%	58.4%	13	27	18	12	2	45	4	32
Scotland	676	687	707	-11	-31	1,336	1,345	1,541	50.6%	45.9%	16	23	21	10	7	11	1	27
Sussex & Surrey	645	656	799	-11	-154	1,052	1,052	1,345	61.3%	59.4%	11	21	16	20	9	19	2	10
Warwick, Leics & Staffs	750	773	907	-23	-157	906	1,210	1,630	82.8%	55.6%	9	16	14	21	8	7	-6	14
Western	844	869	1,025	-25	-181	1,449	1,483	1,876	58.2%	54.6%	3	25	26	36	9	17	6	25
Westmorland	356	371	412	-15	-56	561	568	746	63.5%	55.2%	5	6	13	9	0	4	-1	2
Yorkshire	1,259	1,341	1,530	-82	-271	1,851	2,079	2,635	68.0%	58.1%	13	25	23	36	13	14	1	69
REGIONAL TOTALS	11,491	11,828	13,906	-337	-2,415	18,439	19,313	24,591	63.2%	56.8%	157	355	285	324	170	240	-0.32	8

Table 5. Changes in membership, 2012 to 2022

AM#	AM reference	LMs in 2012	Members 2012	Child attenders 2012	Adult attenders 2012	LMs in 2022	Members 2022	Child attenders 2022	Adult attenders 2022	Total members and attenders at end 2022	Members joining and leaving over ten year period				
											Convincements	Transfers in	Transfers out	Terminations	Deaths
1	Chilterns	7	221	27	113	7	143	0	90	233	28	17	34	37	66
2	Hertford & Hitchin	6	182	26	88	6	142	23	100	265	29	9	20	20	36
3	Luton & Leighton	10	321	57	193	9	270	39	173	482	51	19	27	42	48
4	Northamptonshire	4	95	3	50	4	65	7	29	101	26	6	13	19	29
	BEDFORDSHIRE	27	819	113	444	26	620	69	392	1081	134	51	94	118	179
5	Banbury & Evesham	6	136	0	132	6	95	0	49	144	15	19	19	10	47
6	Mid-Thames	7	248	46	204	8	151	10	115	276	57	32	31	115	51
7	Oxford & Swindon	9	351	53	216	8	313	27	68	408	50	44	38	7	63
	BERKS & OXON	22	735	99	552	22	559	37	232	828	122	95	88	132	161
8	Bristol	7	262	45	169	7	244	65	163	472	76	38	41	26	53
9	Dorset & South Wiltshire	6	204	37	184	6	153	2	64	219	30	35	15	37	68
10	Mid-Somerset	6	267	12	89	4	234	5	67	306	15	23	9	5	39
11	North Somerset	4	120	14	76	4	102	1	24	127	13	25	15	2	11
12	West Somerset	7	137	5	86	7	122	0	73	195	27	24	21	17	30
13	West Wiltshire & East Somerset*	6	179	9	121	6	169	18	129	316	52	34	25	19	51
	BRISTOL & WESSEX	36	1169	122	725	34	1024	91	520	1635	213	179	126	106	252
14	Cumberland	7	177	21	115	6	143	8	65	216	13	21	16	28	58
	CUMBERLAND	7	177	21	115	6	143	8	65	216	13	21	16	28	58
15	Lincolnshire	7	144	8	61	8	146	7	66	219	48	12	20	10	23
16	Nottinghamshire & Derbyshire	9	315	30	222	9	239	6	120	365	49	29	22	13	48
	DERBYS, LINCS & NOTTS	16	459	38	283	17	385	13	186	584	97	41	42	23	71
17	Cornwall	9	209	29	127	8	209	14	127	350	65	44	16	22	58
18	Devon	13	434	57	239	13	331	8	266	605	66	43	27	60	56
	DEVON & CORNWALL	22	643	86	366	21	540	22	393	955	131	87	43	82	114
19	Ipswich & Diss	7	162	19	97	6	157	8	69	234	36	29	18	13	45
20	Mid-Essex	4	85	4	43	4	93	15	20	128	30	3	7	9	29
21	Southern East Anglia	3	162	16	81	4	103	2	51	156	37	9	19	61	40
22	Thaxted	4	93	23	45	4	68	5	28	101	8	6	3	9	22
	ESSEX & SUFFOLK	18	502	62	266	18	421	30	168	619	111	47	47	92	136
23	Bournemouth Coastal	7	169	15	137	6	149	0	54	203	52	16	14	19	52
24	Hampshire & Islands	11	320	38	182	11	265	24	145	434	63	53	40	11	62
	HANTS, SE DORSET & ISLANDS	18	489	53	319	17	414	24	199	637	115	69	54	30	114
25	East Kent	5	131	12	72	4	107	2	73	182	19	19	15	17	21
26	West Kent	4	120	14	98	4	80	0	39	119	14	16	11	1	23
	KENT	9	251	26	170	8	187	2	112	301	33	35	26	18	44
27	Kingston & Wandsworth	5	185	28	143	5	155	12	96	263	62	21	44	32	27
28	London West	7	291	29	211	7	255	22	109	386	71	32	59	33	49
29	North East Thames	7	213	34	75	6	127	16	49	192	48	23	70	25	43
30	North London	5	95	28	62	5	95	26	64	185	39	19	18	4	12
31	North West London	7	234	13	140	6	152	0	121	273	48	16	37	12	54
32	South East London	5	178	53	117	5	139	37	92	268	36	16	37	10	30
33	South London	5	205	16	69	5	146	11	24	181	38	6	10	27	45
	LONDON	41	1401	201	817	39	1069	124	555	1748	342	133	275	143	260
34	East Cheshire	7	171	36	90	8	148	25	103	276	32	16	16	14	40
35	Hardshaw & Mann	5	101	11	89	5	90	24	69	183	23	17	11	9	19
36	Manchester & Warrington	5	201	52	124	5	188	46	124	358	23	22	15	22	30
37	North Wales/Gogledd Cymru	10	170	24	103	10	132	6	48	186	35	15	11	30	40
38	Pendle Hill	6	93	14	76	6	72	0	73	145	14	7	13	17	24
39	Wirral & Chester	3	117	11	79	3	99	1	53	153	14	12	10	21	26
	N WALES & NW ENGLAND	36	853	148	561	37	729	102	470	1301	141	89	76	113	179
40	Northumbria	8	259	27	127	8	212	6	63	281	49	27	22	63	64
41	Teesdale & Cleveland	8	140	17	71	6	114	10	76	200	37	26	11	15	27
42	Wensleydale & Swaledale	2	33	2	37	2	26	0	27	53	3	2	0	2	6
	NE ENGLAND	18	432	46	235	16	352	16	166	534	89	55	33	80	97
43	Cambridgeshire	7	302	52	147	6	252	36	102	390	68	45	25	71	65
44	Norfolk & Waveney	11	294	28	197	10	266	24	165	455	63	29	17	62	74
	NORFOLK, CAMBS & HUNTS	18	596	80	344	16	518	60	267	845	131	74	42	133	139
45	East Scotland	4	111	11	58	3	77	11	52	140	15	16	16	8	26
46	North Scotland	12	122	48	139	8	131	16	100	247	36	26	20	13	21
47	South East Scotland	8	247	95	256	10	240	49	215	504	60	40	39	61	46
48	West Scotland	10	227	53	174	12	228	20	197	445	59	34	14	31	41

Table 5, continued

AM#	AM reference	LMs in 2012	Members 2012	Child attenders 2012	Adult attenders 2012	LMs in 2022	Members 2022	Child attenders 2022	Adult attenders 2022	Total members and attenders at end 2022	Members joining and leaving over ten year period				
											Convincements	Transfers in	Transfers out	Terminations	Deaths
	SCOTLAND	34	707	207	627	33	676	96	564	1336	170	116	89	113	134
49	Surrey & Hampshire Border	5	122	24	58	5	106	1	37	144	55	9	19	21	30
50	Sussex East	9	240	27	111	9	194	0	115	309	48	35	12	48	72
51	Sussex West	8	281	31	179	7	229	30	124	383	44	42	28	50	70
52	West Weald	8	156	35	81	7	116	15	85	216	21	2	19	22	47
	SUSSEX & SURREY	30	799	117	429	28	645	46	361	1052	168	88	78	141	219
53	Central England	17	554	94	314	17	425	0	0	425	59	52	47	60	108
54	Leicester	4	214	56	143	4	205	7	91	303	49	25	20	1	52
55	Staffordshire	7	139	9	107	7	120	0	58	178	37	16	12	30	23
	WARWICK, LEICS & STAFFS	28	907	159	564	28	750	7	149	906	145	93	79	91	183
56	Gloucestershire	8	296	36	220	8	223	17	87	327	36	38	34	45	82
57	Mid-Wales/ Canolbarth Cymru	6	76	18	70	5	71	7	66	144	10	0	7	5	13
58	South Wales/ De Cymru	13	242	35	141	12	195	24	159	378	46	36	28	53	48
59	Southern Marches/ y Gororau Deheuol**	9	216	44	171	8	186	3	138	327	53	48	27	29	97
60	Worcestershire & Shropshire	7	195	16	100	6	169	11	93	273	42	20	21	33	51
	WESTERN	43	1025	149	702	39	844	62	543	1449	187	142	117	165	291
61	Kendal & Sedbergh	4	125	31	116	4	108	9	36	153	14	11	9	1	31
62	Lancashire Central & North	7	223	27	120	5	208	19	115	342	22	25	28	18	31
63	Swarthmoor (SW Cumbria)	4	64	2	38	4	40	1	25	66	5	5	2	1	28
	WESTMORLAND	15	412	60	274	13	356	29	176	561	41	41	39	20	90
64	Brighouse West Yorkshire	5	161	37	114	5	137	22	68	227	9	25	23	15	32
65	Central Yorkshire	7	143	13	68	6	115	0	0	115	31	13	14	19	26
66	Craven & Keighley	5	143	13	92	5	114	11	86	211	22	16	16	24	24
67	Leeds	7	230	27	139	6	173	18	85	276	36	23	23	71	58
68	Pickering & Hull	7	227	11	101	7	153	0	63	216	13	13	11	18	82
69	Sheffield & Balby	4	204	30	119	4	214	10	67	291	40	32	16	14	25
70	York	5	422	86	255	5	353	0	162	515	77	72	22	55	104
	YORKSHIRE	40	1530	217	888	38	1259	61	531	1851	228	194	125	216	351
	BYM Total	478	13906	2004	8681	456	11491	899	6049	18439	2611	1650	1489	1844	3072

Boundary changes: Cumulative figures for convincements, transfers, terminations and deaths for the following meetings are estimated to reflect the proportion of the membership forming each new area meeting in the year they were formed.

* West Wiltshire & East Somerset AM: Owing to boundary changes, meeting figures are included in the appropriate AM figures within the Bristol & Wessex region.

** Southern Marches AM: Owing to boundary changes, meeting figures are included in the appropriate AM figures within the N Wales and NW England region.

AM reference # match numbers used in the map on the back cover.

Table 6. Area meetings by size, 2011 to 2021

AM#	AMs by number of members	Members			Attendees				Combined			Changes: ten year changes as percentage (%) of current AM				
		Members 2012	Members 2022	Average annual change Dec 2012–Dec 2022	Adult attendees 2012	Adult attendees 2022	Average annual change over 10 years	% Adults who are attendees in 2022	Total members and attendees at end 2022*	Change in total members & attendees 2012–2022	Increase or decrease as % of 2012 total	Convincements	Transfers in	Transfers out	Terminations	Deaths
53	Central England AM	554	425	-12.9	314	0	-31.4	0%	425	-537	-56%	14%	12%	11%	14%	25%
70	York AM	422	353	-6.9	255	162	-9.3	31%	515	-248	-33%	22%	20%	6%	16%	29%
18	Devon AM	434	331	-10.3	239	266	2.7	45%	605	-125	-17%	20%	13%	8%	18%	17%
7	Oxford & Swindon AM	351	313	-3.8	216	68	-14.8	18%	408	-212	-34%	16%	14%	12%	2%	20%
3	Luton & Leighton AM	321	270	-5.1	193	173	-2	39%	482	-89	-16%	19%	7%	10%	16%	18%
44	Norfolk & Waveney AM	294	266	-2.8	197	165	-3.2	38%	455	-64	-12%	24%	11%	6%	23%	28%
24	Hampshire & Islands AM	320	265	-5.5	182	145	-3.7	35%	434	-106	-20%	24%	20%	15%	4%	23%
28	London West AM	291	255	-3.6	211	109	-10.2	30%	386	-145	-27%	28%	13%	23%	13%	19%
43	Cambridgeshire AM	302	252	-5	147	102	-4.5	29%	390	-111	-22%	27%	18%	10%	28%	26%
8	Bristol AM	262	244	-1.8	169	163	-0.6	40%	472	-4	-1%	31%	16%	17%	11%	22%
47	South East Scotland AM	247	240	-0.7	256	215	-4.1	47%	504	-94	-16%	25%	17%	16%	25%	19%
16	Nottinghamshire & Derbyshire AM	315	239	-7.6	222	120	-10.2	33%	365	-202	-36%	21%	12%	9%	5%	20%
10	Mid-Somerset AM	267	234	-3.3	89	67	-2.2	22%	306	-62	-17%	6%	10%	4%	2%	17%
51	Sussex West AM	281	229	-5.2	179	124	-5.5	35%	383	-108	-22%	19%	18%	12%	22%	31%
48	West Scotland AM	227	228	0.1	174	197	2.3	46%	445	-9	-2%	26%	15%	6%	14%	18%
56	Gloucestershire AM	296	223	-7.3	220	87	-13.3	28%	327	-225	-41%	16%	17%	15%	20%	37%
69	Sheffield & Balby AM	204	214	1	119	67	-5.2	24%	291	-62	-18%	19%	15%	7%	7%	12%
40	Northumbria AM	259	212	-4.7	127	63	-6.4	23%	281	-132	-32%	23%	13%	10%	30%	30%
17	Cornwall AM	209	209	0	127	127	0	38%	350	-15	-4%	31%	21%	8%	11%	28%
62	Lancashire Central & North AM	223	208	-1.5	120	115	-0.5	36%	342	-28	-8%	11%	12%	13%	9%	15%
54	Leicester AM	214	205	-0.9	143	91	-5.2	31%	303	-110	-27%	24%	12%	10%	1%	25%
58	South Wales AM	242	195	-4.7	141	159	1.8	45%	378	-40	-10%	24%	18%	14%	27%	25%
50	Sussex East AM	240	194	-4.6	111	115	0.4	37%	309	-69	-18%	25%	18%	6%	25%	37%
36	Manchester & Warrington	201	188	-1.3	124	124	0	40%	358	-19	-5%	12%	12%	8%	12%	16%
59	Southern Marches AM	216	186	-3	171	138	-3.3	43%	327	-104	-24%	28%	26%	15%	16%	52%
67	Leeds AM	230	173	-5.7	139	85	-5.4	33%	276	-120	-30%	21%	13%	13%	41%	34%
13	West Wiltshire & East Somerset AM	179	169	-1	121	129	0.8	43%	316	7	2%	31%	20%	15%	11%	30%
60	Worcestershire & Shropshire AM	195	169	-2.6	100	93	-0.7	35%	273	-38	-12%	25%	12%	12%	20%	30%
19	Ipswich & Diss AM	162	157	-0.5	97	69	-2.8	31%	234	-44	-16%	23%	18%	11%	8%	29%
27	Kingston & Wandsworth AM	185	155	-3	143	96	-4.7	38%	263	-93	-26%	40%	14%	28%	21%	17%
9	Dorset & South Wiltshire AM	204	153	-5.1	184	64	-12	29%	219	-206	-48%	20%	23%	10%	24%	44%
68	Pickering & Hull AM	227	153	-7.4	101	63	-3.8	29%	216	-123	-36%	8%	8%	7%	12%	54%
31	North West London AM	234	152	-8.2	140	121	-1.9	44%	273	-114	-29%	32%	11%	24%	8%	36%
6	Mid-Thames AM	248	151	-9.7	204	115	-8.9	43%	276	-222	-45%	38%	21%	21%	76%	34%
23	Bournemouth Coastal AM	169	149	-2	137	54	-8.3	27%	203	-118	-37%	35%	11%	9%	13%	35%
34	East Cheshire AM	171	148	-2.3	90	103	1.3	41%	276	-21	-7%	22%	11%	11%	9%	27%
15	Lincolnshire AM	144	146	0.2	61	66	0.5	31%	219	6	3%	33%	8%	14%	7%	16%
33	South London AM	205	146	-5.9	69	24	-4.5	14%	181	-109	-38%	26%	4%	7%	18%	31%
1	Chilterns AM	221	143	-7.8	113	90	-2.3	39%	233	-128	-35%	20%	12%	24%	26%	46%
14	Cumberland AM	177	143	-3.4	115	65	-5	31%	216	-97	-31%	9%	15%	11%	20%	41%
2	Hertford & Hitchin AM	182	142	-4	88	100	1.2	41%	265	-31	-10%	20%	6%	14%	14%	25%
32	South East London AM	178	139	-3.9	117	92	-2.5	40%	268	-80	-23%	26%	12%	27%	7%	22%
64	Brighouse West Yorkshire AM	161	137	-2.4	114	68	-4.6	33%	227	-85	-27%	7%	18%	17%	11%	23%
37	North Wales AM	170	132	-3.8	103	48	-5.5	27%	186	-111	-37%	27%	11%	8%	23%	30%
46	North Scotland AM	122	131	0.9	139	100	-3.9	43%	247	-62	-20%	27%	20%	15%	10%	16%
29	North East Thames AM	213	127	-8.6	75	49	-2.6	28%	192	-130	-40%	38%	18%	55%	20%	34%
12	West Somerset AM	137	122	-1.5	86	73	-1.3	37%	195	-33	-14%	22%	20%	17%	14%	25%
55	Staffordshire AM	139	120	-1.9	107	58	-4.9	33%	178	-77	-30%	31%	13%	10%	25%	19%
52	West Weald AM	156	116	-4	81	85	0.4	42%	216	-56	-21%	18%	2%	16%	19%	41%
65	Central Yorkshire AM	143	115	-2.8	68	0	-6.8	0%	115	-109	-49%	27%	11%	12%	17%	23%
66	Craven & Keighley AM	143	114	-2.9	92	86	-0.6	43%	211	-37	-15%	19%	14%	14%	21%	21%
41	Teesdale & Cleveland AM	140	114	-2.6	71	76	0.5	40%	200	-28	-12%	32%	23%	10%	13%	24%
61	Kendal & Sedbergh AM	125	108	-1.7	116	36	-8	25%	153	-119	-44%	13%	10%	8%	1%	29%
25	East Kent AM	131	107	-2.4	72	73	0.1	41%	182	-33	-15%	18%	18%	14%	16%	20%
49	Surrey & Hampshire Border AM	122	106	-1.6	58	37	-2.1	26%	144	-60	-29%	52%	8%	18%	20%	28%
21	Southern East Anglia AM	162	103	-5.9	81	51	-3	33%	156	-103	-40%	36%	9%	18%	59%	39%
11	North Somerset AM	120	102	-1.8	76	24	-5.2	19%	127	-83	-40%	13%	25%	15%	2%	11%
39	Wirral & Chester AM	117	99	-1.8	79	53	-2.6	35%	153	-54	-26%	14%	12%	10%	21%	26%

Table 6, continued

AM#	AMs by number of members	Members			Attenders				Combined			Changes: ten year changes as percentage (%) of current AM				
		Members 2011	Members 2021	Average annual change 2011–2021	Adult attenders 2011	Adult attenders 2021	Average annual change 2011–2021	% Adults who are attenders in 2021	Total members and attenders at end 2021*	Change in total members & attenders 2011–2021	Increase or decrease as % of 2011 total	Convincements	Transfers in	Transfers out	Terminations	Deaths
5	Banbury & Evesham AM	136	95	-4.1	132	49	-8.3	34%	144	-124	-46%	16%	20%	20%	11%	49%
30	North London AM	95	95	0	62	64	0.2	40%	185	0	0%	41%	20%	19%	4%	13%
20	Mid Essex AM	85	93	0.8	43	20	-2.3	18%	128	-4	-3%	32%	3%	8%	10%	31%
35	Hardshaw & Mann AM	101	90	-1.1	89	69	-2	43%	183	-18	-9%	26%	19%	12%	10%	21%
26	West Kent AM	120	80	-4	98	39	-5.9	33%	119	-113	-49%	18%	20%	14%	1%	29%
45	East Scotland AM	111	77	-3.4	58	52	-0.6	40%	140	-40	-22%	19%	21%	21%	10%	34%
38	Pendle Hill AM	93	72	-2.1	76	73	-0.3	50%	145	-38	-21%	19%	10%	18%	24%	33%
57	Mid-Wales AM	76	71	-0.5	70	66	-0.4	48%	144	-20	-12%	14%	0%	10%	7%	18%
22	Thaxted AM	93	68	-2.5	45	28	-1.7	29%	101	-60	-37%	12%	9%	4%	13%	32%
4	Northamptonshire AM	95	65	-3	50	29	-2.1	31%	101	-47	-32%	40%	9%	20%	29%	45%
63	Swarthmoor (South West Cumbria) AM	64	40	-2.4	38	25	-1.3	38%	66	-38	-37%	13%	13%	5%	3%	70%
42	Wensleydale & Swaledale AM	33	26	-0.7	37	27	-1	51%	53	-19	-26%	12%	8%	0%	8%	23%
Totals		13,906	11,491	-3.45	8,681	6,049	-3.76	34%	18,439	-6,152	-24%	23%	14%	13%	16%	28%
				Average			Average	Average			Average	Average				

AM reference # match numbers used in the map on the back cover.

* Includes children.

Figure 2. Area Meetings of Britain Yearly Meeting



Quakers share a way of life, not a set of beliefs. Quaker unity is based on shared understanding and a shared practice of silent worship – a communal stillness.

Quakers seek to experience God directly – internally, in relationships with others, and with the world. Local meetings for worship are open to all who wish to attend.

Quakers try to live with honesty and integrity. This means speaking truth to all, including people in positions of power. The Quaker commitment to peace arises from the conviction that love is at the heart of existence and that all human beings are unique and equal.

This leads Quakers to put faith into action by working locally and globally to change the systems that cause injustice and violent conflict.

Accessible versions of this document are available. Please contact the publications manager at publications@quaker.org.uk or call 020 7663 1162.

Britain Yearly Meeting of the Religious Society of Friends (Quakers)
Registered charity number 1127633

Friends House, 173 Euston Road, London, NW1 2BJ

Follow us on social media [@BritishQuakers](https://twitter.com/BritishQuakers)

www.quaker.org.uk