

Moving forward with your support

“Love is the will to nurture
life and grow in oneself and
in another...”

Quaker faith & practice, 22.42

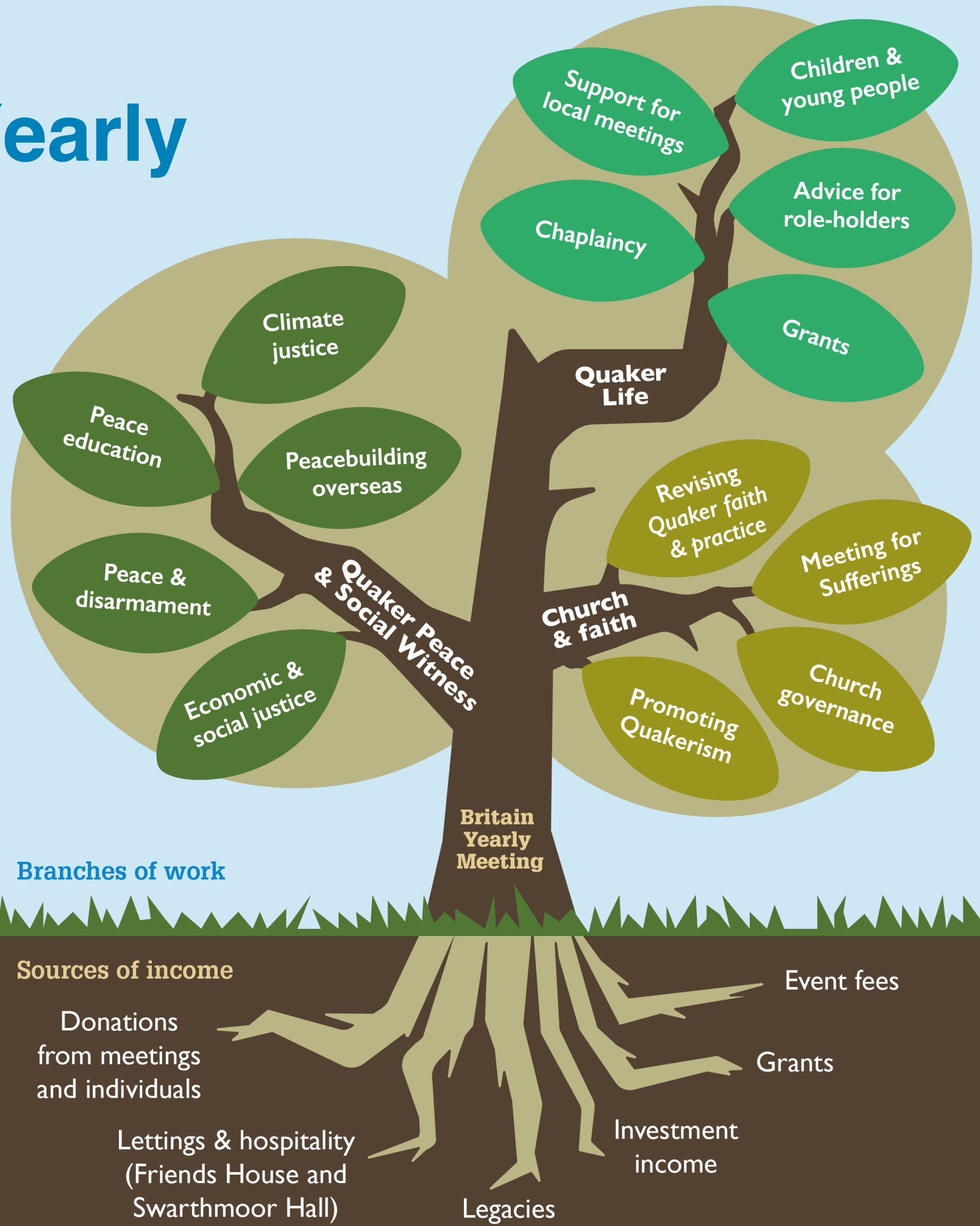


Why support centrally-managed work

“Beyond our own area meeting, funds are required for the wider organisation of Friends and the work we undertake centrally. Without these, we would be a scattered collection of small meetings with no coherence or shared witness.”

Quaker faith & practice (4th edition), 14.05

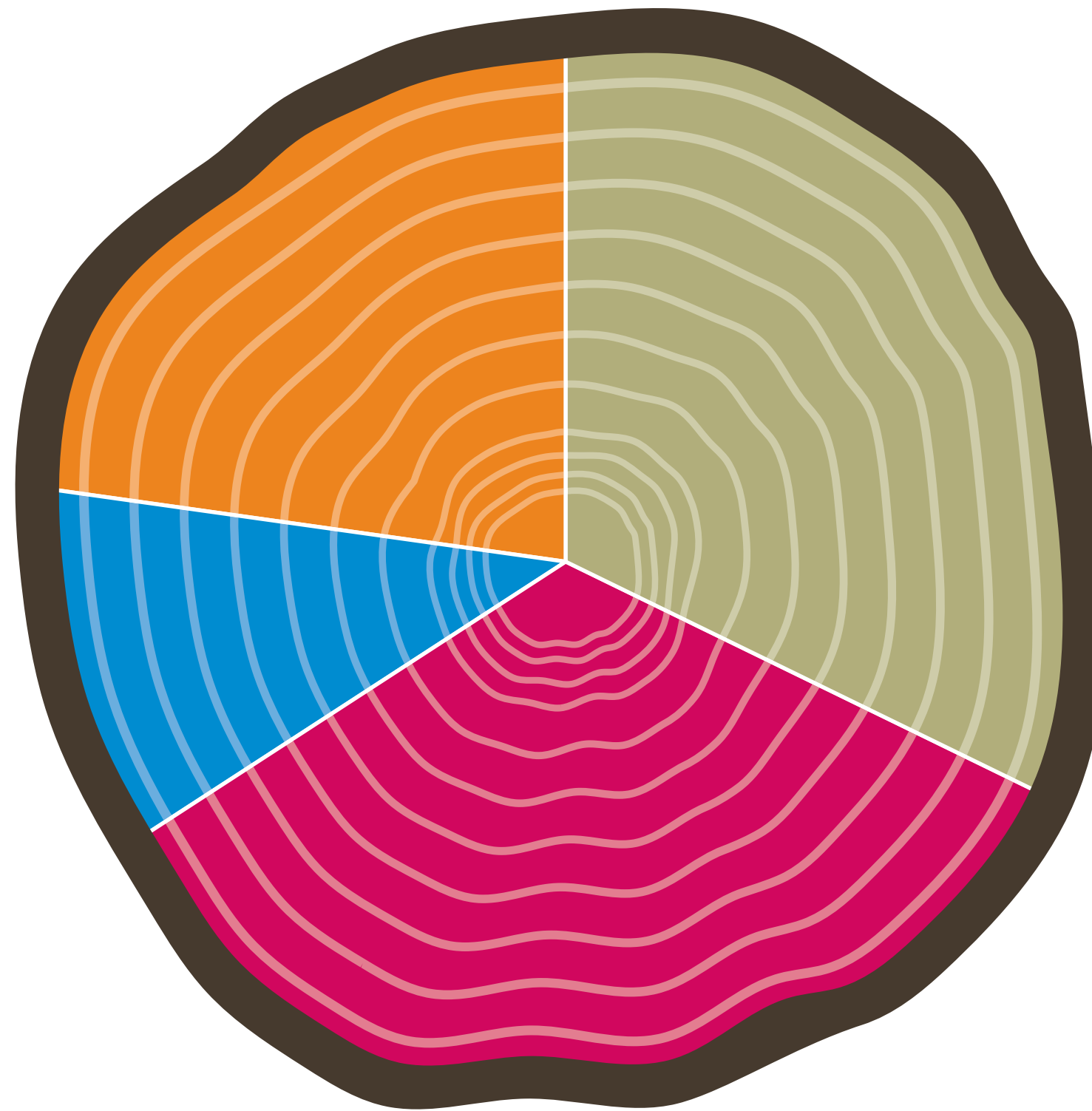
What does Britain Yearly Meeting (BYM) do?



In 2019 we spent £9,053,000 on:

**Promoting
Quakerism (22%)**

**Sustaining church
and faith (11%)**

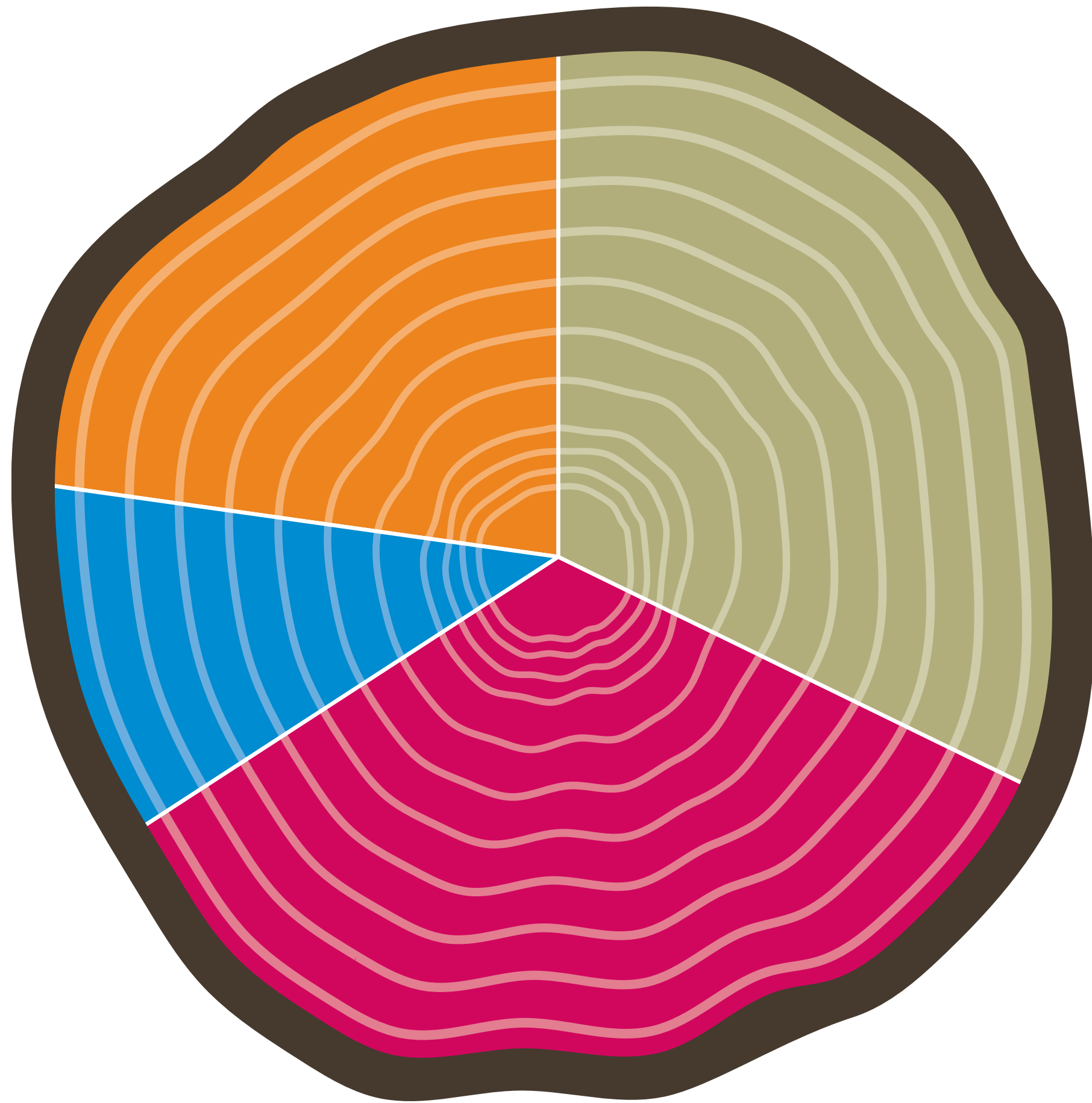


**Supporting
meetings (33%)**

**Witness through
action (32%)**

We received £2.2m as contributions from Friends in 2019

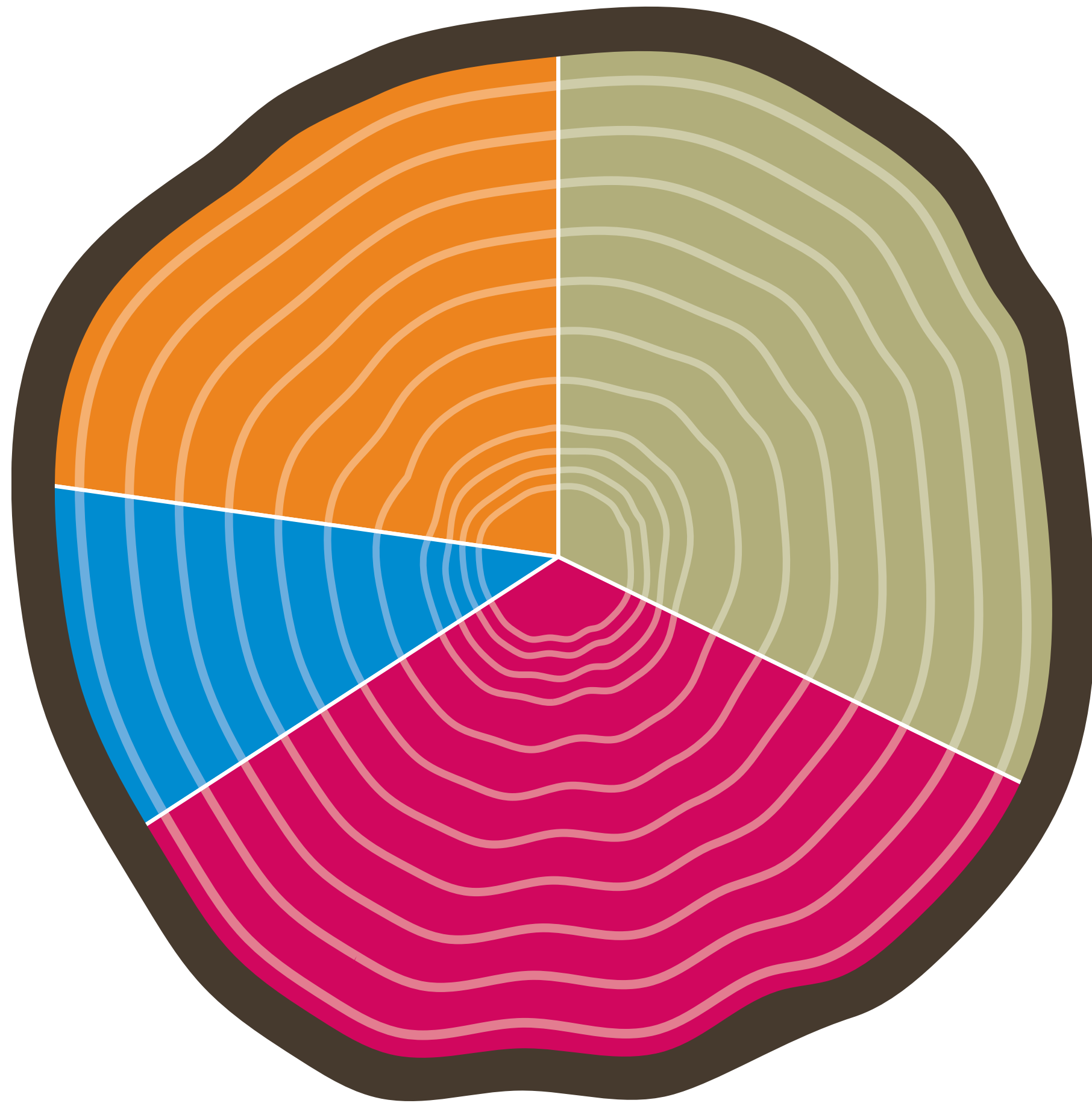
Where your money goes



Supporting meetings (33%):

- Resources for Children and Young People
- Local Development workers help Friends sustain the life of their meetings
- Safeguarding

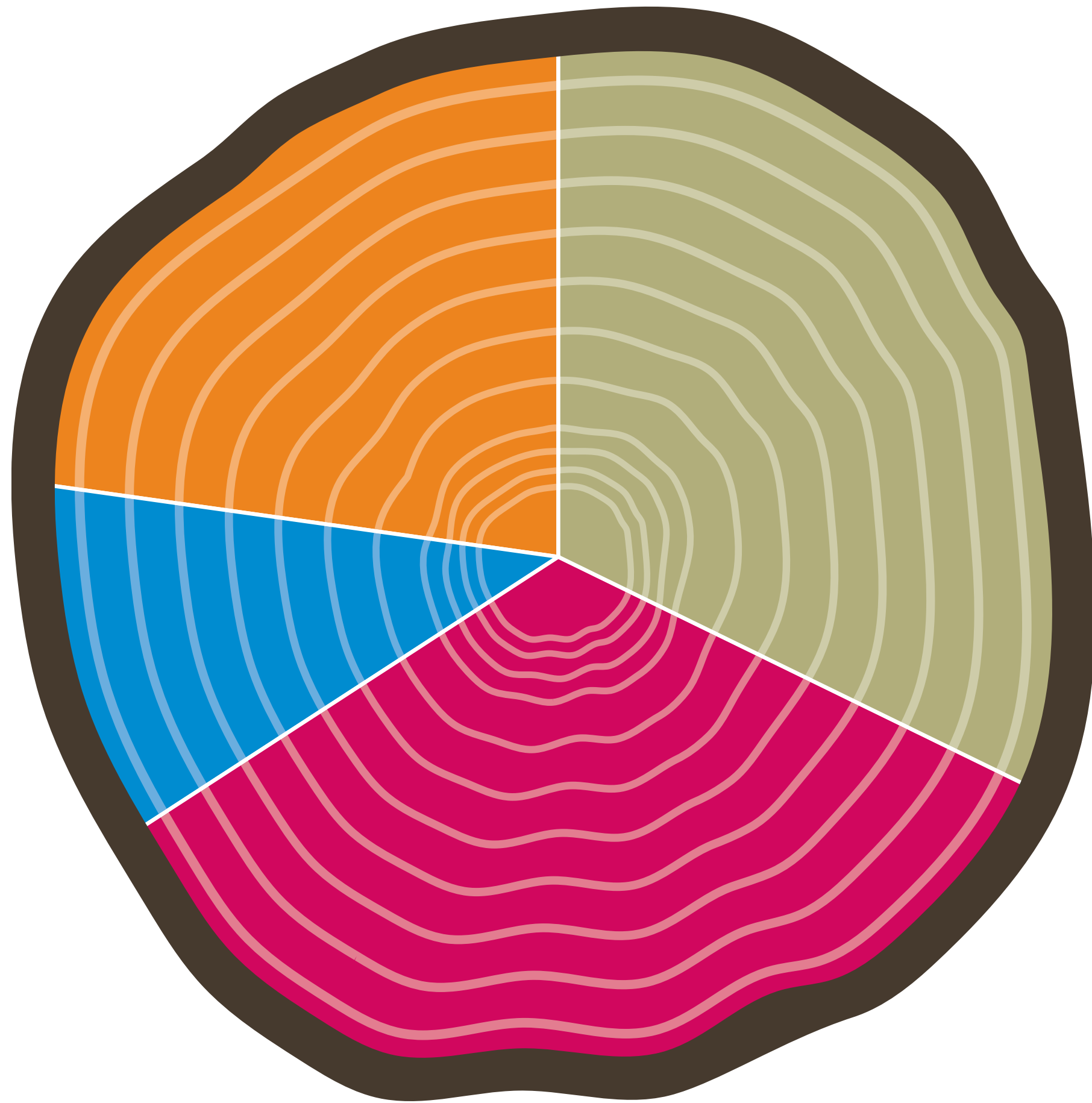
Where your money goes



Witness through action (32%):

- Campaigning for a more peaceful and sustainable world
- Practical action on peacebuilding and education at home and abroad
- Resources and training for Friends taking local action

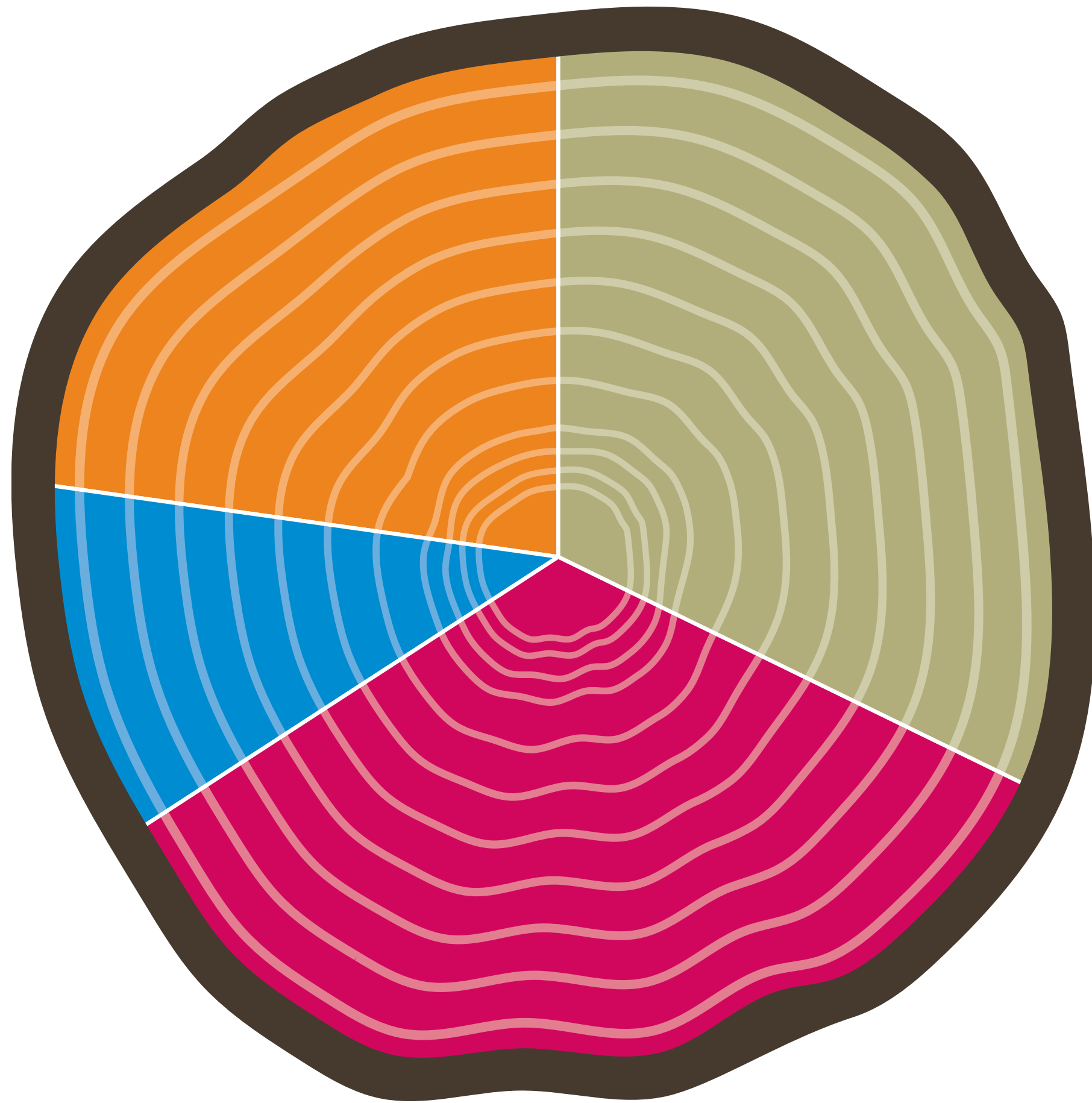
Where your money goes



Promoting Quakerism (22%):

- Influencing public policy to bring Quaker values to the world
- Providing a strong collective voice for Quakers in Britain
- Sharing our faith with others
- Increasing Quaker numbers

Where your money goes



Sustaining church and faith (11%):

- Sustaining Meeting for Sufferings & Yearly Meeting
- Facilitating revision of Quaker faith & practice
- Simplifying Quaker business practices

How BYM is funded

- **Lettings & Hospitality (43%)**
 - Zero income at present and will take time to rebuild
- **Legacies (23%)**
 - Unaffected so far but this is a volatile income stream
- **Investment Income (12%)**
 - Income reduced by the effect of the pandemic on economy
- **Grants (5%)**
 - Unaffected so far, some trusts may lose some investment income
- **Contributions from meetings and individuals (18%)**
 - In the hands of Friends

NB: These figures are based on an average of all income streams over the last three financial years.

The challenge ahead

- BYM faces a serious financial challenge now and in the years ahead
- 2020 income will be £3.5m under-budget
- Unrestricted reserves will be £2m lower by the end of 2020
- Income for the year ahead is uncertain
- More of the centrally-managed work of Friends will need to be sustained by direct support from Friends
- Long-term regular giving is the support needed to sustain this work

www.quaker.org.uk

Follow us on social media @BritishQuakers

