



1960s: As a nation we are better housed than ever before, yet the housing needs of some sections of the community are not being met.

QHT was created so that Friends can help those people who are particularly vulnerable when looking for a home.

Practical witness since 1967

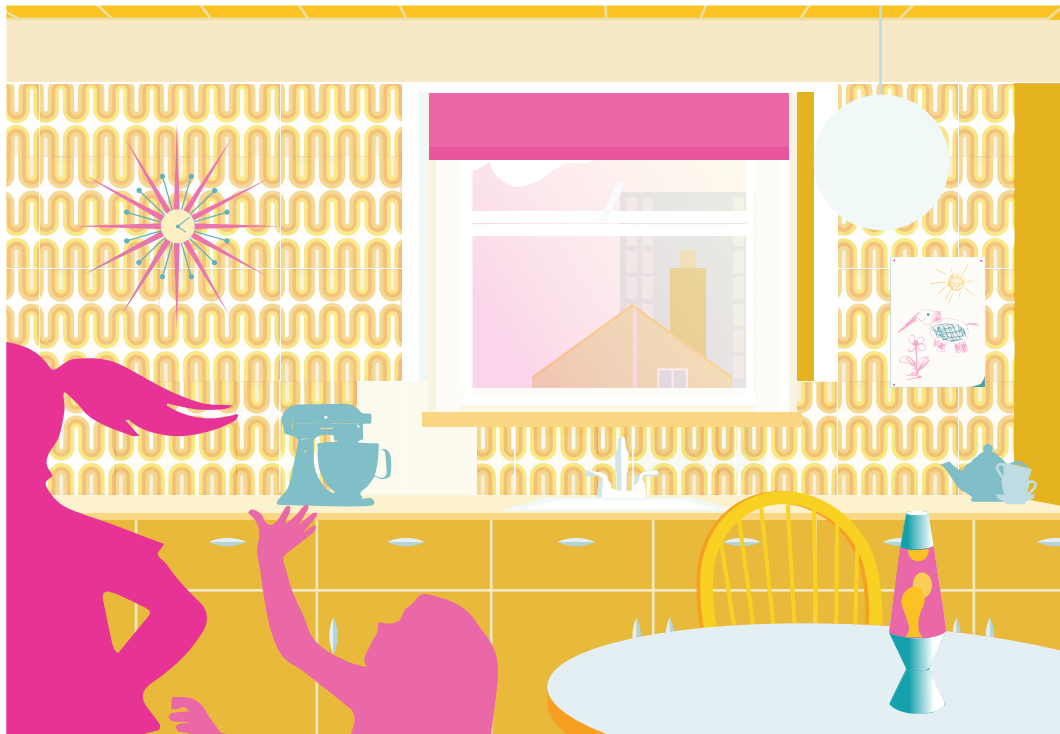
Quaker Housing Trust, Friends House
173-177 Euston Road, London NW1 2BJ

E: involve@qht.org.uk T: 020 7663 1036
W: www.qht.org.uk

Registered company 00924311. Registered charity 254704.
Quaker faith & practice 8.15

QUAKER
HOUSING
TRUST





1970s: About a quarter of the housing stock is unfit for habitation and homelessness in our large cities is growing.

In its first 10 years QHT primarily helped projects housing elderly people, single families, ex-prisoners and people who were lonely and/or homeless

Practical witness since 1967

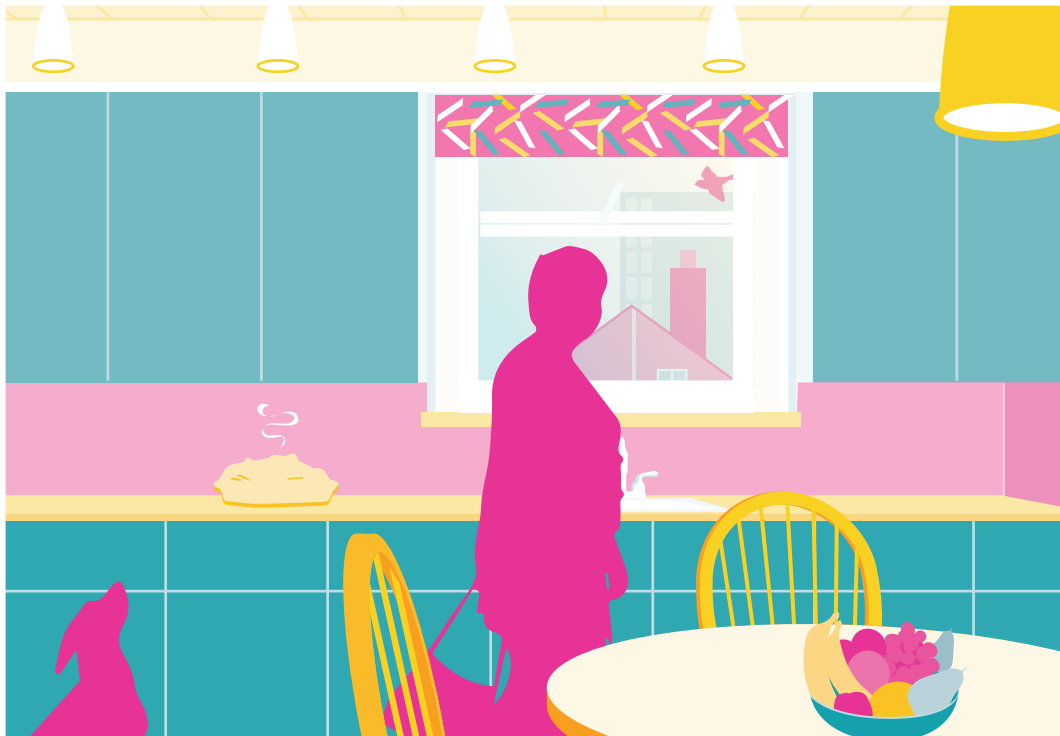
Quaker Housing Trust, Friends House
173-177 Euston Road, London NW1 2BJ

E: involveme@qht.org.uk T: 020 7663 1036
W: www.qht.org.uk

Registered company 00924311. Registered charity 254704.
Quaker faith & practice 8.15

QUAKER
HOUSING
TRUST





1980s: When QHT was 10 years old 34,000 families were officially homeless; 10 years later there were 120,000.

In comparison with the problem QHT resources are minimal, but its contributions to small groups often means the difference between success and failure.

Practical witness since 1967

Quaker Housing Trust, Friends House
173-177 Euston Road, London NW1 2BJ

E: involve@qht.org.uk T: 020 7663 1036
W: www.qht.org.uk

Registered company 00924311. Registered charity 254704.
Quaker faith & practice 8.15

QUAKER
HOUSING
TRUST





1990s: The inequalities and injustices that faced the groups identified in 1967 in their search for a decent home, have not changed substantially.

Even modest QHT grants at an early stage often plant the seeds from which significant new organisations have grown

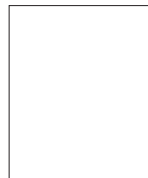
Practical witness since 1967

Quaker Housing Trust, Friends House
173-177 Euston Road, London NW1 2BJ

E: involve@qht.org.uk T: 020 7663 1036
W: www.qht.org.uk

Registered company 00924311. Registered charity 254704.
Quaker faith & practice 8.15

QUAKER
HOUSING
TRUST





2000s: Housing needs in the 21st century are just as urgent as those in the 1960s.

QHT continues to help projects give safe homes to people of all ages and needs, now including refugees, asylum seekers, migrants and survivors of trafficking.

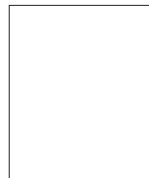
Practical witness since 1967

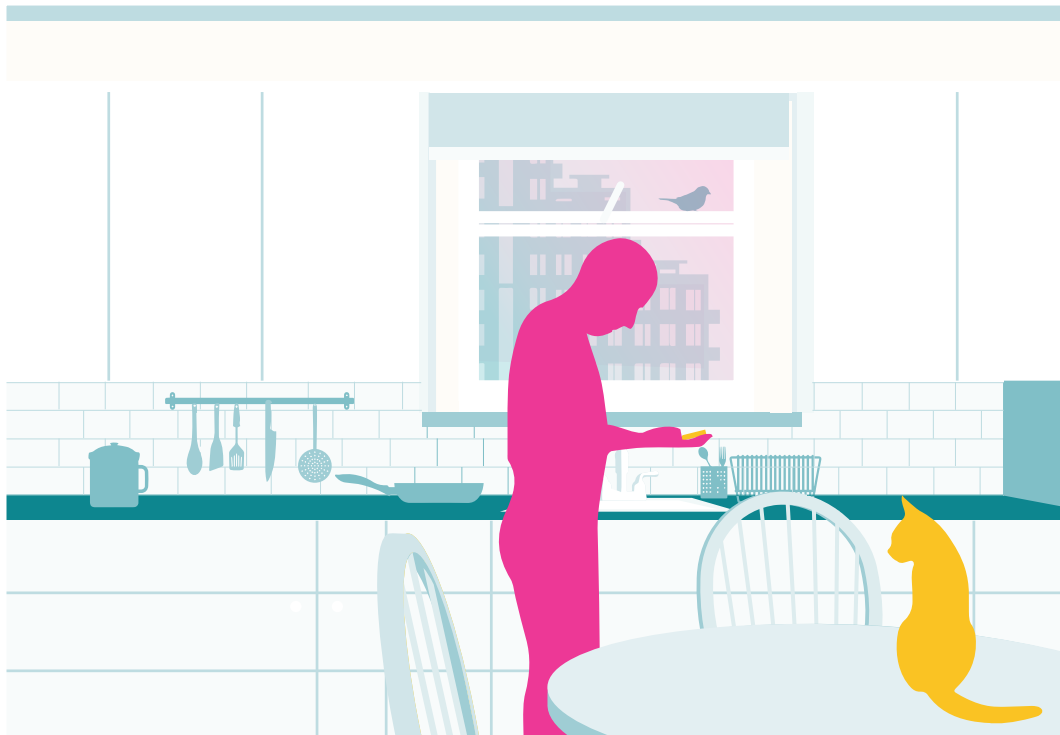
Quaker Housing Trust, Friends House
173-177 Euston Road, London NW1 2BJ

E: involve@qht.org.uk T: 020 7663 1036
W: www.qht.org.uk

Registered company 00924311. Registered charity 254704.
Quaker faith & practice 8.15

QUAKER
HOUSING
TRUST





2010s: The housing crisis now is truly shocking, but there is nothing inevitable about it and the problem *is* soluble.

Meanwhile, QHT continues to respond creatively to the approaches from projects contributing to local solutions for people in housing need.

Practical witness since 1967

Quaker Housing Trust, Friends House
173-177 Euston Road, London NW1 2BJ

E: involve@qht.org.uk T: 020 7663 1036
W: www.qht.org.uk

Registered company 00924311. Registered charity 254704.
Quaker faith & practice 8.15

QUAKER
HOUSING
TRUST





Quaker Housing Trust
is a way of allowing
those who have
accumulated housing
wealth to share it with
those who have not

Practical witness since 1967

Quaker Housing Trust, Friends House
173-177 Euston Road, London NW1 2BJ

E: involve@qht.org.uk T: 020 7663 1036

W: www.qht.org.uk

Registered company 00924311. Registered charity 254704.
Quaker faith & practice 8.15

QUAKER
HOUSING
TRUST





Lives have been
changed by
Quaker investment
in meeting
housing need.

Practical witness since 1967

Quaker Housing Trust, Friends House
173-177 Euston Road, London NW1 2BJ

E: involve@qht.org.uk T: 020 7663 1036
W: www.qht.org.uk

Registered company 00924311. Registered charity 254704.
Quaker faith & practice 8.15

QUAKER
HOUSING
TRUST





Housing the
'unhouseable' is not
just about providing
bricks & mortar, but
challenging prejudices
within society.

Practical witness since 1967

Quaker Housing Trust, Friends House
173-177 Euston Road, London NW1 2BJ

E: involve@qht.org.uk T: 020 7663 1036
W: www.qht.org.uk

Registered company 00924311. Registered charity 254704.
Quaker faith & practice 8.15

QUAKER
HOUSING
TRUST





Friends discover
again and again
that money is only
one requirement.
Both faith and
works are needed.

Practical witness since 1967

Quaker Housing Trust, Friends House
173-177 Euston Road, London NW1 2BJ

E: involve@qht.org.uk T: 020 7663 1036
W: www.qht.org.uk

Registered company 00924311. Registered charity 254704.
Quaker faith & practice 8.15

QUAKER
HOUSING
TRUST





As spiritual creatures,
we need hope as well
as shelter – and we
are optimistic that
change *is* possible.

Practical witness since 1967

Quaker Housing Trust, Friends House
173-177 Euston Road, London NW1 2BJ

E: involve@qht.org.uk T: 020 7663 1036

W: www.qht.org.uk

Registered company 00924311. Registered charity 254704.
Quaker faith & practice 8.15

QUAKER
HOUSING
TRUST





Where will the Society of Friends' spiritual and political focus on housing issues be in the future?

Practical witness since 1967

Quaker Housing Trust, Friends House
173-177 Euston Road, London NW1 2BJ

E: involve@qht.org.uk T: 020 7663 1036

W: www.qht.org.uk

Registered company 00924311. Registered charity 254704.
Quaker faith & practice 8.15

QUAKER
HOUSING
TRUST